



(Sound reduction floor)

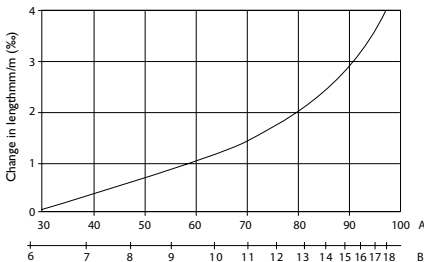
**General**

These guidelines are for the installation of 22 mm Forestia Slisse floor in Extra quality.

Forestia Slisse floor has tongue and grooves on four sides.

Forestia Slisse floor contains 5-8% moisture on delivery from the factory, corresponding to equilibrium at approx. 20-50% RH (Fig. 1). It is therefore very important that building moisture is kept under control by ventilation and heating.

The panels will move slightly in response to variations in air humidity. Allow for a change in panel surface dimension of approx. 0.15% (1.5 mm/m) in response to a change in relative humidity from 30 to 70% (Fig. 1).



A = Relative humidity  
B = Panel's equilibrium moisture

**Areas of use**

Forestia Slisse floor is for use on wooden joists where there are noise reduction requirements. Forestia Slisse floor can be used as a platform floor (Climate class 2).

**IMPORTANT!**

Due to the slits, these panels do not have their full load-bearing capacity until the top floor is laid. For this reason, when the floor is used as a working platform during construction, a full load-distributing surface **must** be laid over the Forestia Slisse floor as a temporary measure. This could be in chipboard (or similar) of minimum 10mm thickness. This flooring can then be removed as the top floor is mounted.

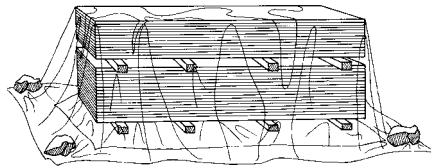
Do not stand packs of panels or other heavy items directly on the floor. Instead rest them on bearers laid across the joists

Once the top floor has been mounted, the floor will withstand normal loads.

**Transport, storage, handling**

The panels must be protected from moisture during transport and storage. They must be stored on a stable and flat substrate, with 3-5 bearers per pallet. Panels must never be laid directly on the ground! If panels have to be stored outdoors, a moisture barrier must be laid under the pallets to prevent moisture absorption from the ground (Fig. 2).

Fig. 2



Transport, storage and handling of the panels must avoid damaging the edge profiles. If the edge profiles are seriously damaged, the joint must be supported, or the panel replaced

**Installation foundation**

It is recommended that the joists are dimensioned according to the SINTEF Construction Detail Sheet, joist table for high rigidity.

The joists must be levelled and installed with exact centre-to-centre spacing, max. c/c 0.60 m.

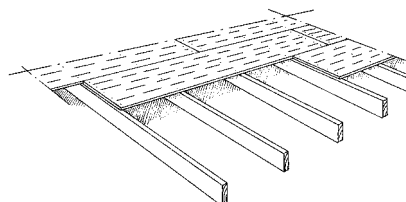
All free panel edges must be supported.

**Installation**

The panels must be installed offset to each other directly on the levelled joists, with the stamped side facing upwards. The longitudinal direction of the panels must always be at right angles to the joists.

The panels must span at least two joist gaps, and end-joints must always be formed over the centre-line of a joist (Fig. 3).

Fig. 3



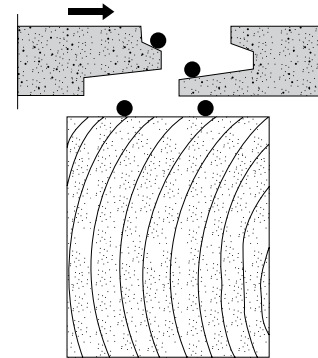
Against fixed structures, there must be a clearance of min. 10 mm. Large floor surfaces over 10 m long must be broken up into fields with expansion gaps between them.

In the case of holes larger than 0.15 x 0.15 m, the panel edges must be supported.

The panels must be glued to the joists and at all joints. This makes the floor more rigid and reduces the risk of creaking once the joists are dry.

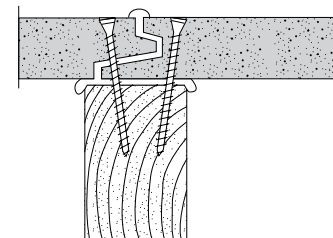
It is recommended that two lines of adhesive be applied to each joist. Tongue and groove profiles must be fully glued (Fig. 4).

Fig. 4



The panels must be driven so tightly that adhesive emerges from the joints (Fig. 5). Remove excess adhesive. Allow for adhesive consumption of approx. 1 litre per 10 m<sup>2</sup> floor area.

Fig. 5



A platform floor in Forestia Slisse floor will be exposed to precipitation during the construction period. Water, frost or ice on the joists must be removed before mounting the boards. It is important that the adhesive can tolerate the climatic conditions occurring during installation. Recommended adhesive is Casco chipboard adhesive or equivalent.

Fix the panels to all supports with screws. It is recommended that screws designed for fixing wood to wood or wood to steel are used - electrolytic zinc.  
Essve chipboard screws 4.2/55mm or equivalent.

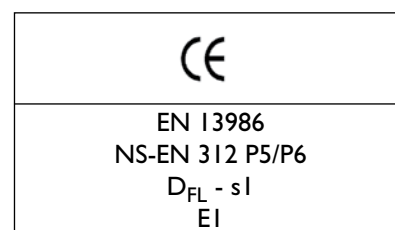
See also our screw and adhesive guide on [forestia.no](http://forestia.no).

For nailing, hot-dip galvanised square nails 2.5/65 must be used. In case of mechanical nailing, ridged 3.1/65 or similarly effective special nails must be used.

When using screws, at least four screws must be used at each panel end and three screws for every joist under the panel. When using nails, at least five nails must be used at each panel end and three screws for every joist under the panel.

Before laying the top floor, it must be checked that the subfloor has good contact with the joists and does not creak. If it does, consider inserting more screws. Forestia Slisse floors' damp content may not exceed 10% when the top floor is laid.

The top floor should be laid as late in the construction period as practically possible.



#### General information

Chipboard is a factory-produced product. Despite thorough quality controls, it may sometimes occur that defective panels are delivered from the factory. Note that the user must check the product PRIOR TO INSTALLATION. Our instructions and recommendations are based on our experience. They are given here as an aid for consumers in finding the best working method and achieving the optimum result. Consumers' working conditions are outside our control. We accept no liability for incorrect use of the products. We reserve the right to make changes to the specification without prior warning



**FORESTIA**  
Forestia AS  
Damvegen 31, 2435 Braskereidfoss  
Phone: +47 38 13 71 00  
E-mail: [forestia.kundesenter@byggma.no](mailto:forestia.kundesenter@byggma.no)  
[www.forestia.no](http://www.forestia.no)