



WE'RE
LAUNCHING BRAND
NEW CEILING PANELS

12X620X1220MM

Forestia Premium Ceiling panels
are ready-to-paint plain ceiling
panels with a locking profile.

FIT READY TO PAINT

FORESTIA Premium Ceiling

We are delighted to introduce the new Forestia Premium Ceiling panels, complete with a locking profile. The overall dimensions of the panels are 12x620x1220mm and come in packs of four. Forestia Premium Ceiling panels are ceiling panels with excellent screw strength.

Forestia Premium Ceiling panels are great for both new builds and renovations. If the underlay is straight and smooth, you won't need to tear down the old ceiling panels, but can install the new panels on top.

For new builds, or if you want to rip out the old panels and replace them with new ones, Forestia Premium Ceiling panels can be installed both across or along cc 300mm battens measuring 300 mm.



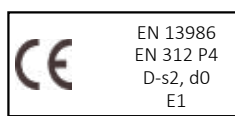
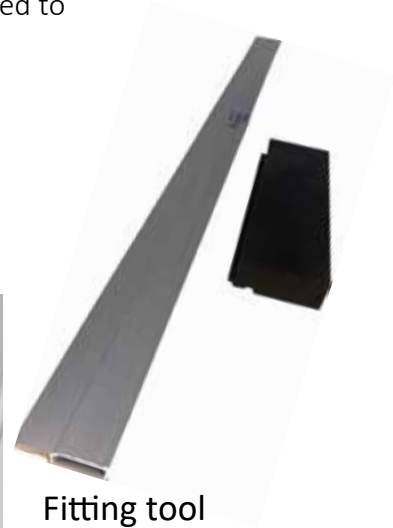
FORESTIA Premium Ceiling

Product development is a key focus area for us. We take great pleasure in being able to offer our customers a product that provides a flat hold without the need to plaster and sand before painting.

For optimum results, we recommend the following:

- Forestia Premium Ceiling panels should not be smoothed. After assembly and applying the first coat of paint, a good tip is to lightly sand the joints* Then apply one to two more coats.
- Fitting tools such as the Forestia guide rails and tapping block are specially adapted to the Forestia Premium Ceiling panels' profile, and must be used when installing.
- Follow the assembly instructions closely.

** This is important. The joints should not be smoothed, but lightly sanded* with 240-grit sandpaper after the first coat. Then apply another 1-2 coats. If you sand too hard or with paper that is too coarse, you will remove the surface of the primer tape.*



PATENT PENDING

These guidelines apply to the installation of Forestia Premium Ceiling. The ceilingpanel is delivered in size 12x620x1220mm with a 4-sided lockingprofile. **NB!** The panels must be handled carefully, so the surface and profiles are not damaged. Forestia Premium Ceiling has a moisture content 5-8 % on delivery from the factory. It is therefore vital that the moisture in the building is kept under control using ventilation and heating. Masonry and plaster work must be completed before installation of Forestia Premium Ceiling begins. The panels will expand/contract a little with variations in humidity. A dimensional change in the panel-plane of approximately 1,0mm/m can be expected with a change in relative air humidity from 30-60%.

Area of use

Forestia Premium Ceiling can be installed where moisture-resistant materials are not required (climate class 1). Can be installed on both battens and an existing ceiling. It is very important to have a smooth underlay before mounting.

Transport, storage, handling

The panels must be protected from moisture during transport and storage. The panels must be stored on a stable and flat base with 3-5 laths per pallets. If several pallets are stacked, the laths must be aligned directly above eachother. The panels must be stored indoors, and allowed to acclimise at room temperature for a minimum of 3 days.



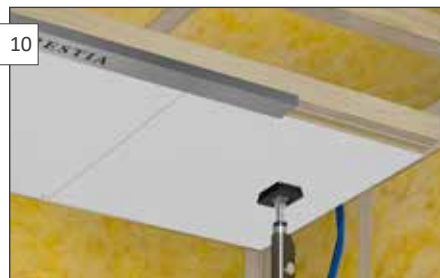
1
Have all the necessary equipment ready before installation starts. For ceiling surfaces longer than 8 m, extra clearance for expansion is required, min. 1.5 mm per metre of ceiling. Premium Ceiling panels are installed on min. 30-mm battens, or directly on existing ceiling panels. **NB.** The Forestia guide rails and tapping block are specially adapted to the profiles on Premium Ceiling panels.



4
Measure and cut the first panel (panel width must be minimum 550 mm). Be careful with the panel's profile. When using a saw, place the panel with the foil facing down



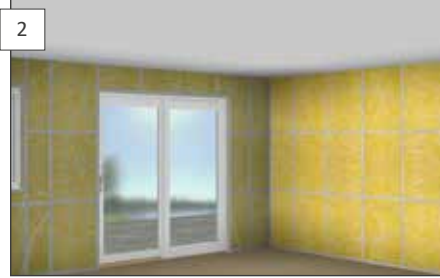
7
Cut and install the next panel. Remember to glue the short-end profile. We recommend PVAc glue or equivalent.



10
To fit the last panel, use a crowbar to close the profile. Use the guide rail for a final adjustment.



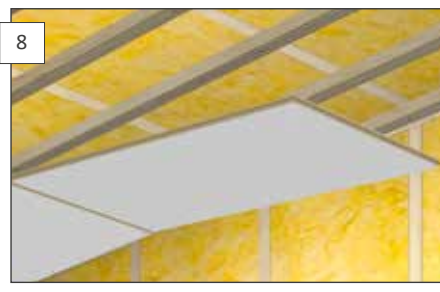
13
The ceiling is ready for painting. We recommend a 100% acrylic ceiling paint with a gloss level 02. Paint one coat, LIGHTLY sand with 240 sandpaper/glass paper over joints. Then paint 1-2 more coats according to National esthetic requirements for finished treated surface.



2
Install the ceilingpanels in the light direction. Can be installed both across and along cc 300mm battens. Be careful with the panel's profile. During assembly, the profile should be checked for defects/damage. Faults on the panels must be reported before installation. Complaints will be invalid if the panels installed have visible defects. If the panel is damaged during/after installation, it must be replaced before the adhesive dries.



5
Use a ceiling support to hold up the panels during installation. The Forestia tapping block must be used to avoid damaging the profile when the panel is to be clicked into place. This tapping block is adapted to the panel's profile.



8
Tilt the panels and click the profile into place.



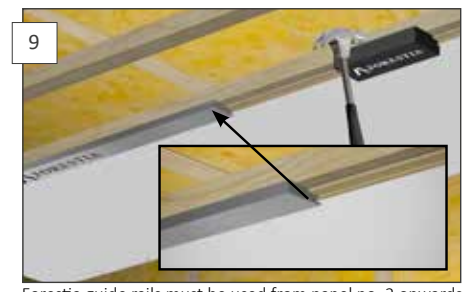
11
Panel row no. 2 . Cut the first panel in the second row of panels. The joint on the panels short side are staggered. Glue the profile, then click it into place.



3
Install the first row of panels following the line. Remember that there must be a 10-mm clearance by all fixed structures. It is essential that the underlay is perfectly straight. Any unevenness in the framework **MUST** be corrected before installation.



6
Forestia Premium Ceiling panels are screwed into the groove with a wooden screw. Use a lowering head 3.0/35mm or equivalent. Screw distance must be 150 mm. A stapler can also be used. They should have a straight back, min. a width of 10 mm and the length of the legs should be min. 35 mm. **NB!** Pressure on the stapler gun must be adjusted carefully. Staples/screws must not be submerged, but must follow the surface in the grooves.



9
Forestia guide rails must be used from panel no. 2 onwards. It is essential that the panels are placed evenly against one another for optimum results. **Hold** the guide rail in place in the profile when using the tapping block to drive the panels close together. (Be careful that the guide rail doesn't fall down when in use).



12
On the next panel, glue both the long side and the short end. The rest of the ceiling is installed. Tip! Place the ceiling support as close to the shortend profile as possible. The panel will easier click into place when using the tapping block.